

Jefferson Union High School District Board of Trustees Presentation 12/15/2020

CTE Presentation

01

About CTE

What is CTE & CTE Pathways

02

Where are we now?

Current JUHSD CTE Pathways

03

CTE Funding

CTE Grants Awards

04

What is planned for Spring 2021

Upcoming CTE Events

05

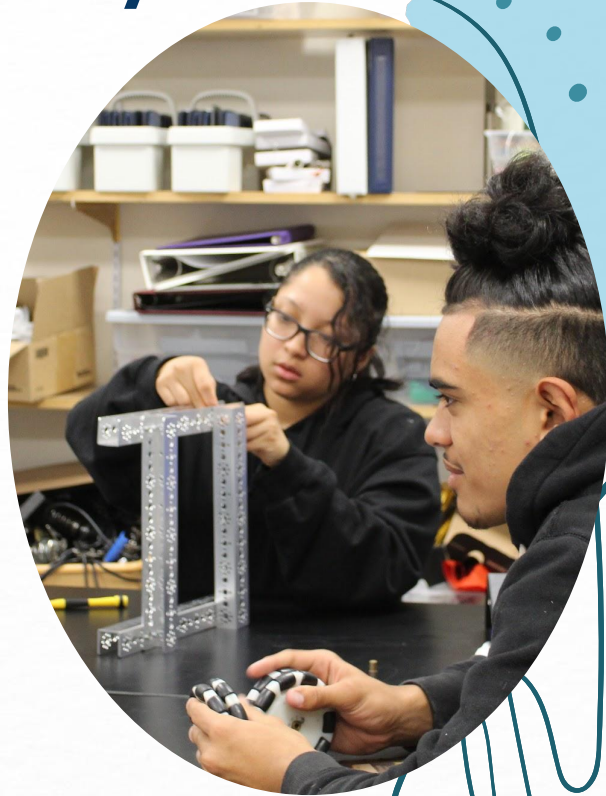
Future CTE Plans

Goals for 21/22 school year

What is CTE in the 21st Century?

CTE programs prepare students to enter today's competitive workforce. CTE courses support the California Common Core State Standards and CTE Model Curriculum Standards, preparing students for a successful high school experience, postsecondary options and the world of work.

CTE is designed for **all students**, providing a foundation of industry based technical skills and academic knowledge. CTE courses help all students make informed decisions about college and career choices. Many of the courses are UC a-g approved.



About CTE Pathways



A CTE pathway is a sequence of two or more CTE courses within an industry sector. The first course is an introductory or concentrator course and the 2nd course is the capstone course. Pathways are designed to connect high school classes to college, industry certifications, and/or a career.

**COLLEGE WAS ONCE SEEN AS
STEAK WHILE CAREER AND
TECHNICAL EDUCATION WAS SEEN
AS HAMBURGER. TODAY, COLLEGE
IS STILL STEAK BUT CTE HAS
BECOME LOBSTER. IN THE IDEAL
K-12 SCHOOL SETTING, ALL
STUDENT'S WOULD BE ENGAGED IN
HIGH QUALITY 'SURF N' TURF.'**

MICHAEL ARMBRUSTER

CTE Resources

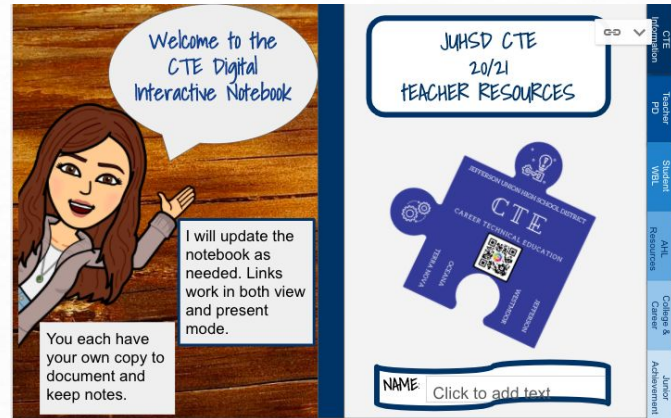
CTE Website

The CTE website provides information on CTE pathways to the community and highlights the JUHSD pathways. Click image below to enter website.



CTE Teacher Digital Notebook

The digital notebook provides teachers with updated information on CTE professional developments, CTE resources, student WBL opportunities and more. Each teacher has their own notebook to document their CTE activities.



JUHSD's CTE Pathways

Pathways & Courses

We have a total of 12 pathways with 26 courses offered to students in JUHSD

UC a-g

15 courses are designated as a-g. In spring 2021 we will be submitting 4-6 additional courses for a-g approval.

Certifications

We currently provide 4 industry certifications in 5 pathways

Dual Enrollment

We currently offer 5 dual enrollment courses and have 1 articulation agreement. We are collaborating with Skyline CC to Dual Enroll 3-4 additional courses in Fall 2021

Jefferson CTE Pathways

Jefferson High School



Industry Sector	CTE Pathway	Concentrator Course	Capstone Course	Dual Enrollment Course	UC a-g	Industry Certification	Teacher
Art, Media, & Entertainment	Design, Visual, & Media Arts	Digital Arts 1	Digital Arts 2		Yes "f" Fine Arts	Adobe Photoshop	Cristina Lewis
Art, Media, & Entertainment	Performing Arts - Dance	Dance Composition	Dance Production		Yes "g" Elective		Heike Mansel
Engineering & Architecture	Engineering Technology	Engineering 1 *- Introduction to Robotics	Engineering 2 - *Digital Electronics: Project Lead the Way OR Principles of Engineering		*Yes "g" Elective		Joel Bruxvoort
Hospitality, Tourism, & Recreation	Food Service & Hospitality	Culinary Arts 1 - Food & Nutrition	Culinary Arts 2 - Foodservice & Hospitality	HTM125 - Hospitality (included in Culinary Arts 2)		ServSafe	Amanda Olson
Transportation Industry Sector ONLY 20/21	Systems Diagnostics, Service & Repair	Auto Tech 1	Auto Tech 2-3	articulated with Auto 710 at Skyline College.	No	PS1	Dave Dyssegard

Terra Nova CTE Pathways



Terra Nova High School

Industry Sector	CTE Pathway	Concentrator Course	Capstone Course	Dual Enrollment Course	UC a-g	Industry Certification	Teacher
Art, Media & Entertainment	Design, Visual, & Media Arts	Journalism 1	Journalism 2		Yes "b" English		Alyssa Jenkins
Art, Media & Entertainment	Performing Arts	Drama			Yes 'f' Fine Arts		Scot Schneider
Art, Media & Entertainment	Production/ Managerial Arts	Theater Production			Yes "f" Fine Arts		Scot Schneider
Building & Construction Trades	Cabinetry, Millwork, & Woodworking	Wood Tech 1	Wood Tech 2		No		Paul Spinetti
Transportation Industry Sector	Systems Diagnostics, Service & Repair Pathway			Auto 710: Fundamentals of Auto Technology			Skyline Community College

Westmoor CTE Pathways



Westmoor High School

Industry Sector	CTE Pathway	Concentrator Course	Capstone Course	Dual Enrollment or 3rd year Course	UC a-g	Industry Certification	Teacher
Building & Construction Trades	Cabinetry, Millwork, & Woodworking	*Wood Tech 1	Wood Tech 2	Wood Tech 3 -4	*Yes "g" Elective		John Lavine
Business & Finance	Financial Services	*Accounting 1	Accounting 2		*Yes "g" Elective		Ben Pham
Business & Finance	Financial Services	Personal Finance			No		Ben Pham
Fashion & interior Design	Fashion Design & Merchandising	Fashion Design & Construction 1	Fashion Design & Construction 1		Yes "g" Elective		Terri Cabarle
Information & Communication Technologies	Software & Systems Development Pathway	*Exploring Computer Science	Web Development		*Yes "g" Elective	Adobe Photoshop	Michael Simon
Manufacturing & Product Development	Product Innovation & Design	Introduction to Technical Engineering - PLTW	Computer Integrated Manufacturing - PLTW		Yes "g" Elective	Fusion 360	John Lavine
Transportation Industry Sector Returns 21/22	Systems Diagnostics, Service &	Automotive Mechanics 1-2	Automotive Mechanics 3-4	*Students with a "B" or higher may qualify for direct access to	No	PS1	Dave Dyssegard

Oceana & JUHSD CTE Pathways



Oceana High School

Industry Sector	CTE Pathway	Concentrator Course	Capstone Course	Dual Enrollment Course	UC a-g	Industry Certification	Teacher
Education, Child Development & Family Services	Education	*Early Childhood Education 212: Child, Family & Community	*Early Childhood Education 210: Early Childhood Principles	*Both courses are through Skyline Dual Enrollment			Skyline Dual Enrollment



Jefferson Union High School District

Industry Sector	CTE Pathway	Concentrator Course	Capstone Course	Dual Enrollment Course	UC a-g	Industry Certification	Teacher
Health Science	Health Science - Primary Care	*HSCI 180 - Gateway to Health	*Bio 310- Nutrition	*Both courses are through Skyline Dual Enrollment			Skyline Dual Enrollment

Work-Based Learning



In 2019 we partnered with PilotCity to connect students to employers in San Mateo County, such as San Mateo County Labs. Students in the Computer Science, Engineering, Manufacturing, and Woodshop pathways engaged in work-based learning (WBL) projects. Students participating were eligible to apply for summer internship opportunities.

Field Trips and Guest Speakers



Ignite virtual panel
discussion with women in
STEM



Many of our pathways have
participated in Junior
Achievement's virtual guest
speaker series



Culinary Students
touring SF City College

Classroom Project Based Learning

Terra Nova Times

Volume 15, Issue 13

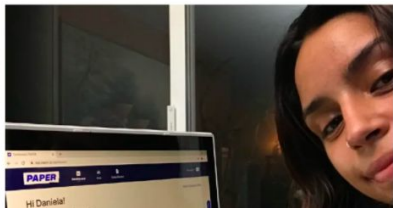
Terra Nova High School

December 2, 2020

Paper.co comes to save the day

By Sophie Phelps
Times staff writer

Recently, the Jefferson Union High School District, and then Terra Nova, have partnered with Paper, a tutoring company that specializes in helping provide a platform that will support and personalize learning. Paper provides services for students such as live feedback from certified educators and feedback on writing work and essays within twenty-four hours. The option of having feedback on rough drafts is a



Paper is an amazing program that I will definitely be using for the rest of the year," she said. "The tutors are amazing and super sweet. I am so glad that I have this free opportunity especially since teachers are running low on time and sometimes fifteen minutes after class just isn't enough." In addition to helping students become successful as they can, they aim to close opportunity gaps between their fellow classmates. In explaining the district's rationale for contracting with Paper, JHSD Associate Superintendent Karen Baca said,



Fashion 2 students constructed 150 masks and donate them to Puente Resource Center in Pescadero for farm workers and their families.



MISE EN PLACE

Once the dough was combined, I wrapped it in saran wrap and refrigerate it.

Cut the grape tomatoes in half and place it on a paper towel-lined plate, cut side down.

Finely chop the spring onion.

Add the shredded cheddar cheese into a bowl.

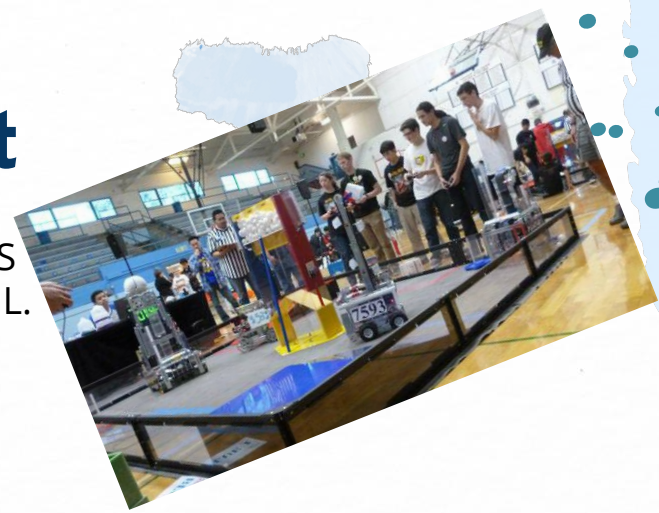
Journalism is producing an online school newspaper during AHL

Culinary Arts student practicing their mise en place during AHL

After School Enrichment



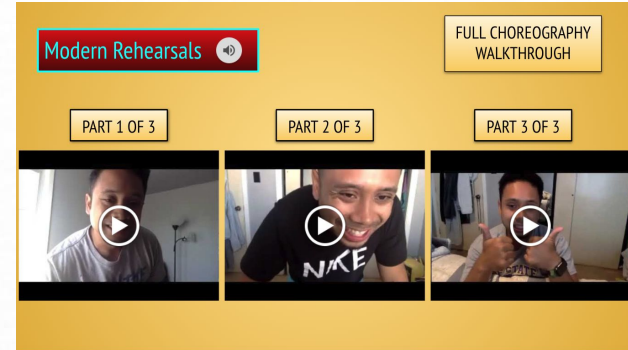
Robotics Clubs @ WHS & JHS continue to meet during AHL. Students have been distributed kits to continue their growth in robotics.



FBLA Chapter @ WHS continues to meet and participate in chapter events virtually



Grizzly News Network - JHS



Mission Fusion Virtual Rehearsals

Current CTE Grants

\$86,780.00

Perkins Federal Grant

Yearly Grant
20/21 Funding

Supports
Conferences,
Materials &
Supplies

\$227,065.00

CTE Incentive Grant (CTEIG)

Yearly Grant
20/21 Funding

Supports Industry
Equipment, CTE
Coordinator and
CTE Capstone
sections

\$268,200.00

**SWP K-12
SMCOE RD 1**

30 month grant -
July 2019 - Dec. 2021
JUHS D Portion

Supports pathway
building, student
support services,
and dual enrollment

\$124,000.00

**SWP K-12
SMCOE RD 2**

30 month grant -
July 2020 - Dec. 2022
JUHS D Portion

Supports CA
Careerzone and
postsecondary
exploration

\$236,000.00

**SWP K-12
JUHS D RD 2**

30 month grant
July 2020 - Dec.
2022

Supports the
growth of the
Engineering
Pathway

Future CTE Grants

SWP K-12 SMCOE RD 3

30 month grant
Jan 2021-June 2023

Total Grant Awarded 1.2M
JUHSD Portion approx. 250K

Supports Building pathways and
dual enrollment (Continues work
of RD 1)

SWP K-12 JUHSD RD 3

30 month grant
Jan 2021 - June 2023

Grant Awarded \$513k

Supports promoting
and building CTE
pathways with JESD

CTEIG 20/21

Applied for CTEIG
funds in September
2020

Grants will be
awarded in Jan/Feb
2021

Perkins 21/22

Application period is
typically in March

Grants will be
awarded in Summer
2021

Upcoming CTE Events

CTE Awareness Month

This 1st time campaign will kicks-off in January when we return from winter break. The campaign will feature weekly live sessions with a CTE teacher, industry guest speakers, information on postsecondary options, and CTE Facts. The goal of the campaign is that students will make meaningful selections when choosing their CTE courses.



North County CTE Event

In partnership with SSFUSD and Skyline college we will be hosting a virtual event on Wednesday, April 14th for our CTE capstone students. This event will focus on postsecondary options and career readiness skills

Goals for 21/22 School Year



Strengthen Pathways

Include more Work-Based Learning opportunities and Industry Certifications



Increase Dual Enrollment

Students are College and Career Ready on the Ca Dashboard when students complete a pathway that includes a dual enrollment course.



Honor Student Work

Implement a Capstone Project
CTE Completer Cords at Graduation



Increase Internships

Continue work with SMCOE to offer local student internship opportunities

Michael Simon

Ben Pham

Alyssa Jenkins

Kalon Behraves

Terri Cabarle

Elaine Francisco

Joel Bruxvoort

John Lavine

Thank You CTE Team

Paul Spinetti

Amanda Olson

Cuauhtemoc Martinez

Heike Mansel

Cristina Lewis

Dave Dyssegard

Scot Schneider